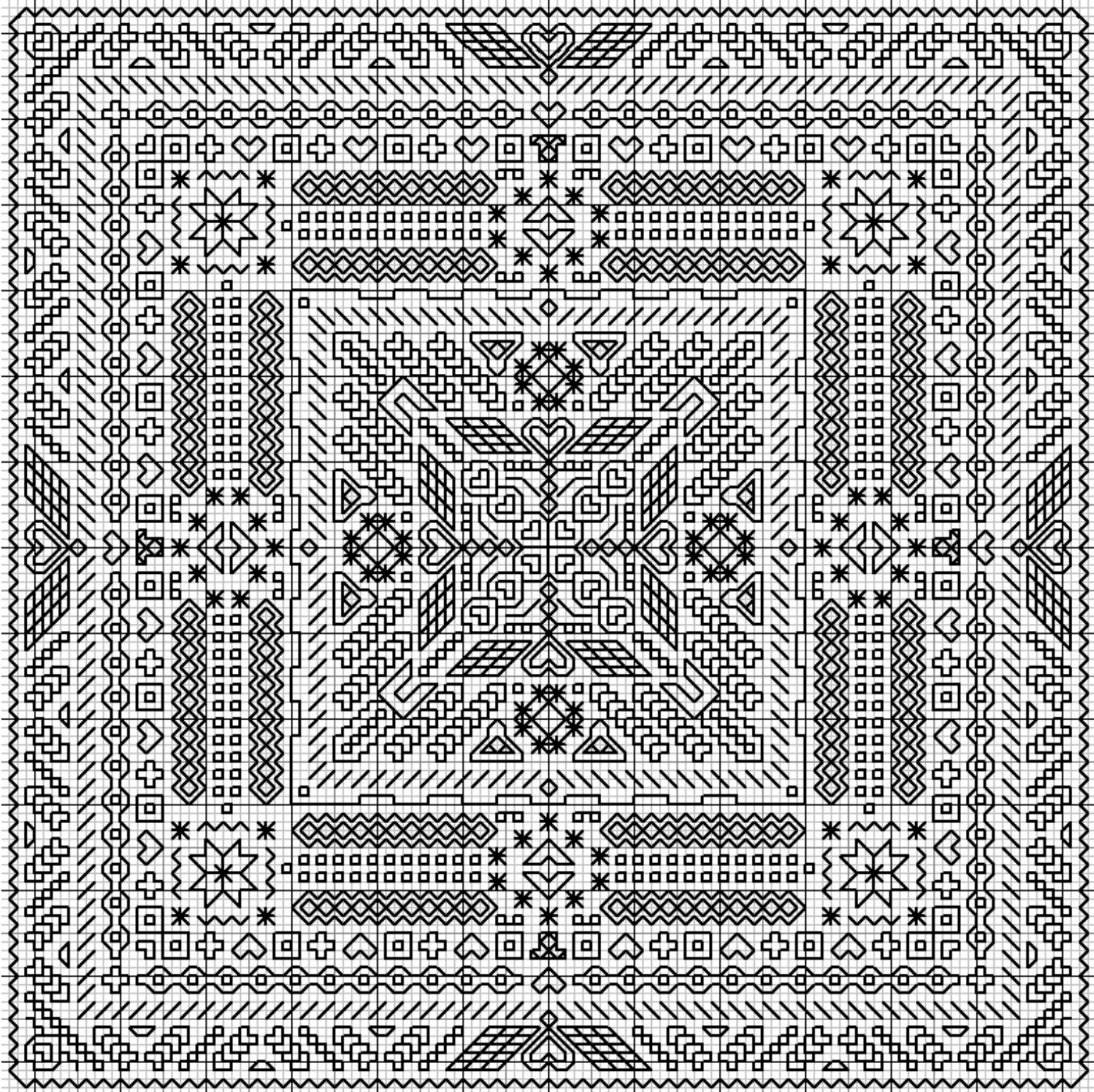


Blackwork Challenge #2



Design size = 126 x 126 stitches

This design can be done in one or many colours.

32.0 x 32.0 cm at 10ct (15m / 1 strand)

22.9 x 22.9 cm at 14ct (11m / 1 strand)

17.8 x 17.8 cm at 18ct (8m / 1 strand)

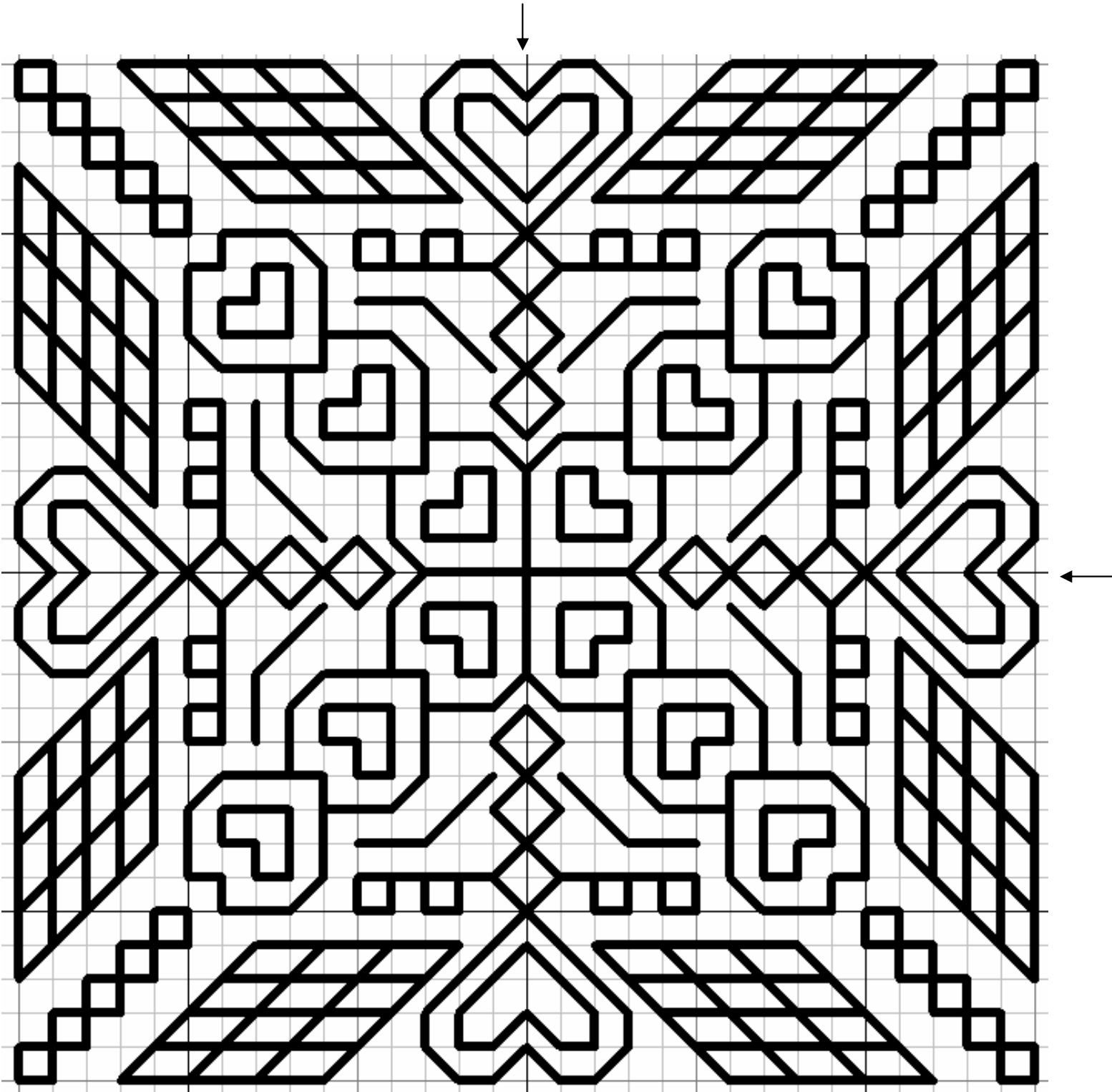
- = back stitch / Holbein

■ = cross stitch

On 10 count Aida use 2 strands, on 14 count or even weave use 1 strand.

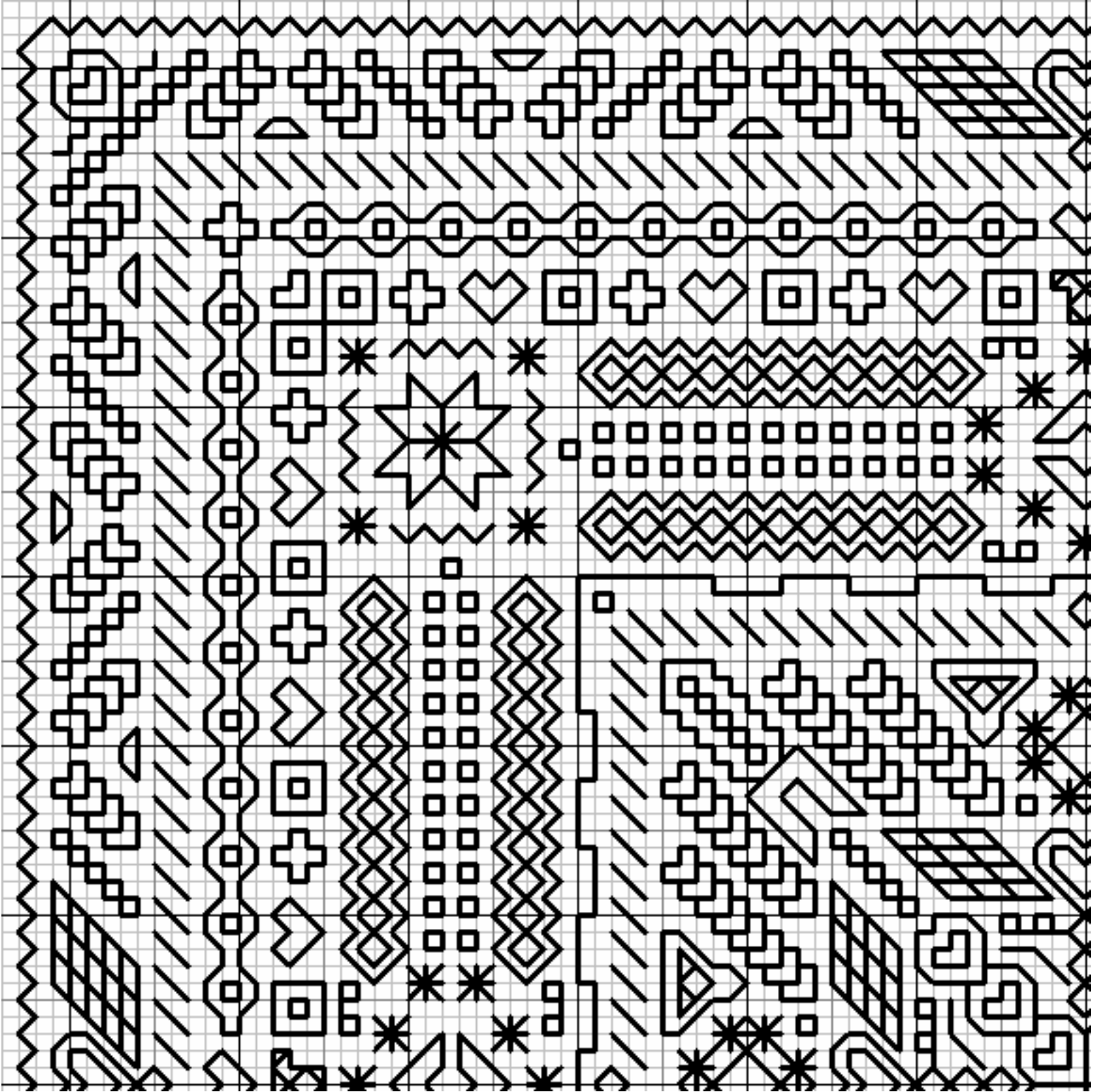
Start in the center & work your way out.

Blackwork Challenge #2
center detail



Blackwork Challenge #2

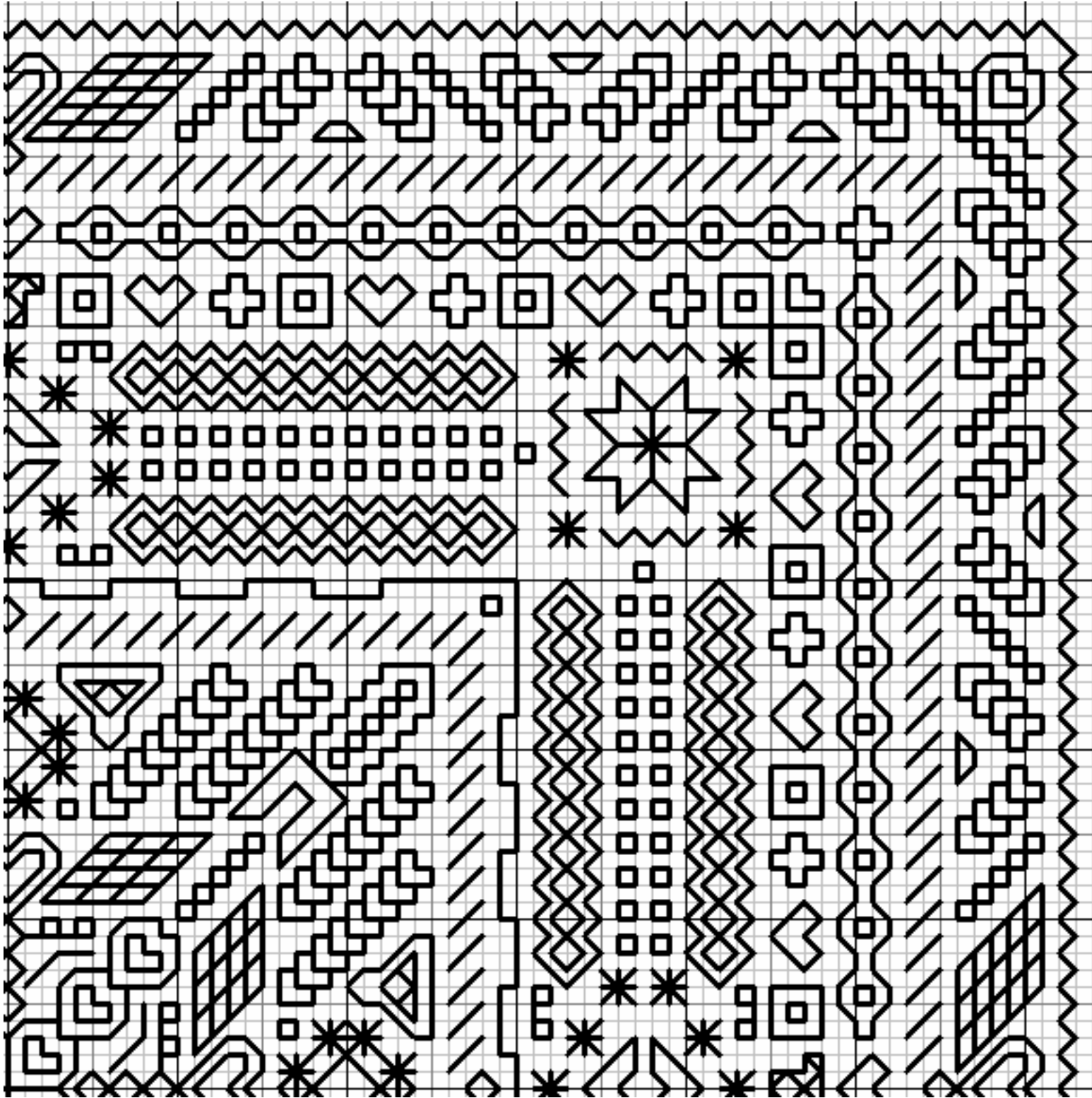
Top Left



↑
center

Blackwork Challenge #2

Top Right

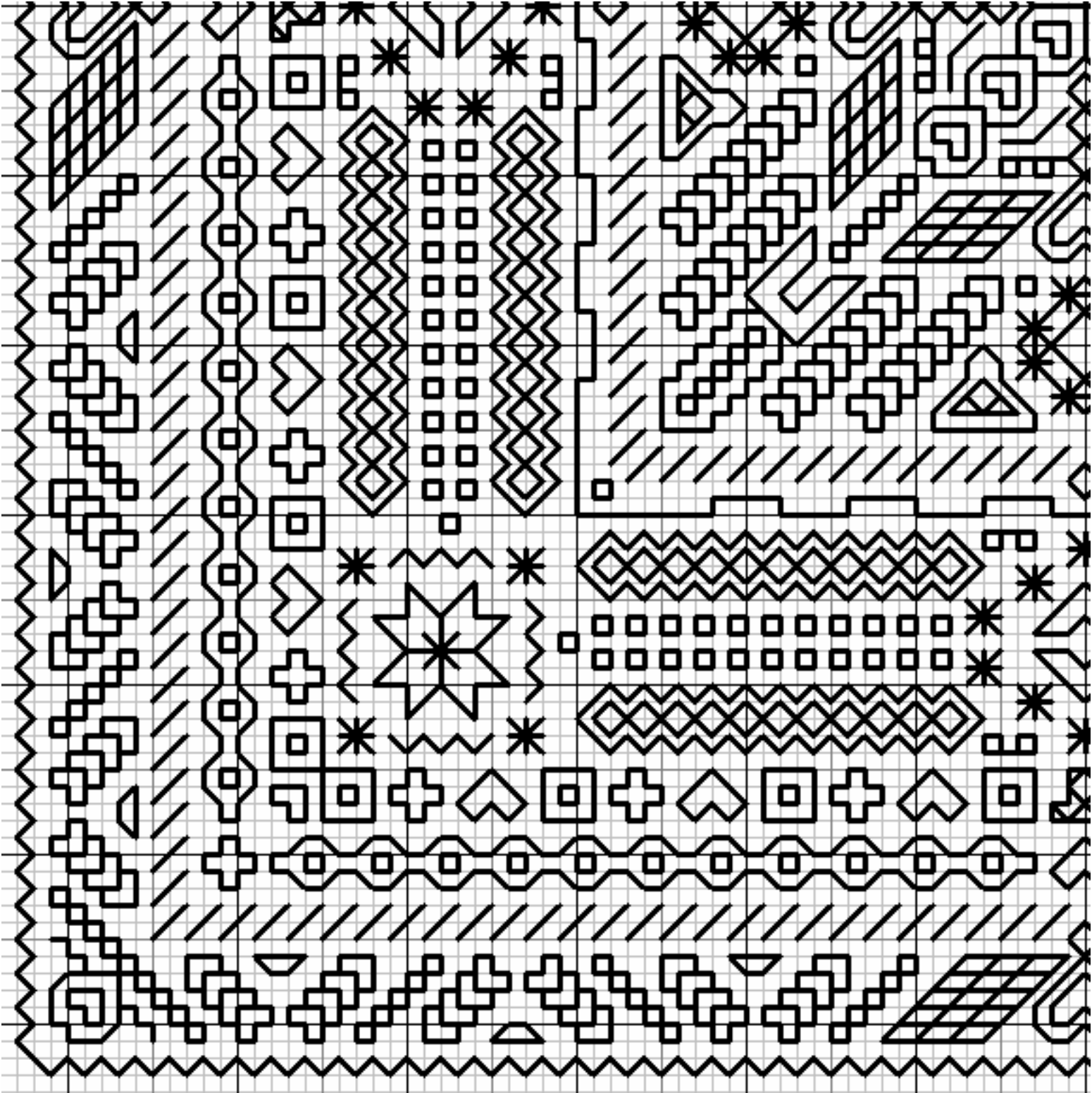


center

Blackwork Challenge #2

Bottom Left

center



Blackwork Challenge #2

Bottom Right

center

