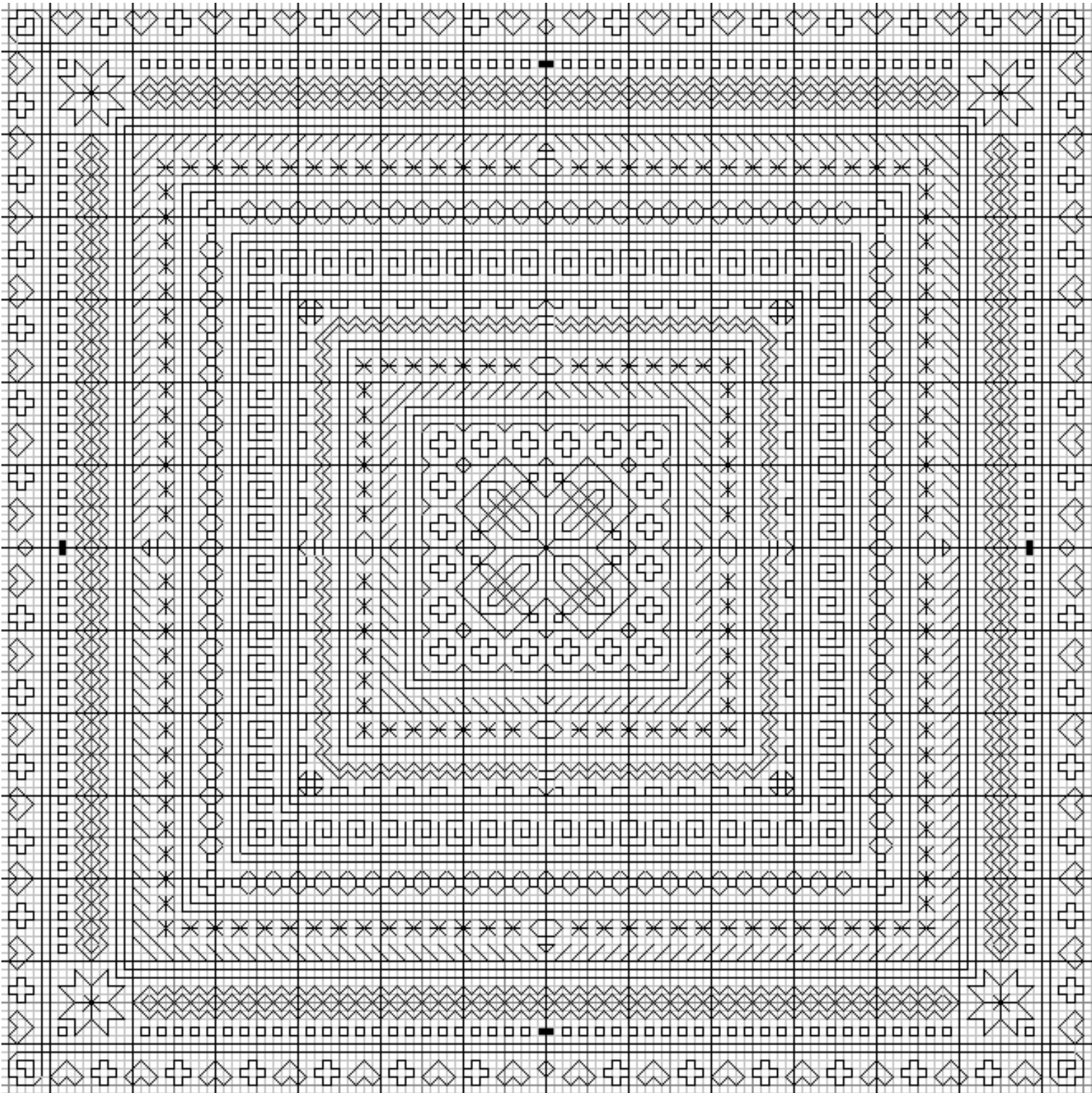


Blackwork Challenge #1



Design size = 130 x 130 stitches

This design can be done in one or many colours.

33.0 x 33.0 cm at 10ct (16m / 1 strand)

23.6 x 23.6 cm at 14ct (11m/ 1 strand)

18.3 x 18.3 cm at 18ct (9m / 1 strand)

- = back stitch / Holbein

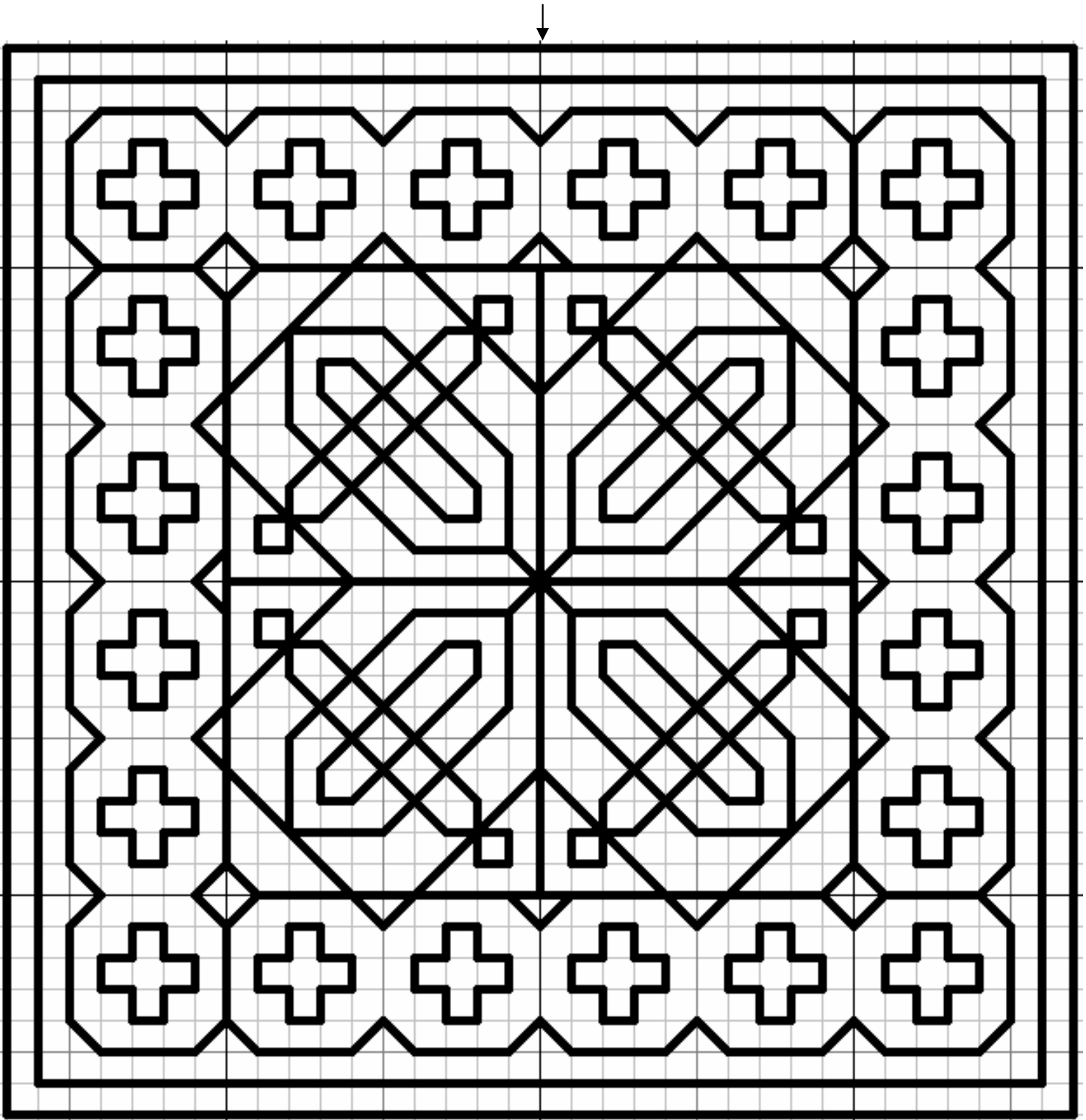
■ = cross stitch

On 10 count Aida use 2 strands, on 14 count or even weave use 1 strand.

Start in the center & work your way out.

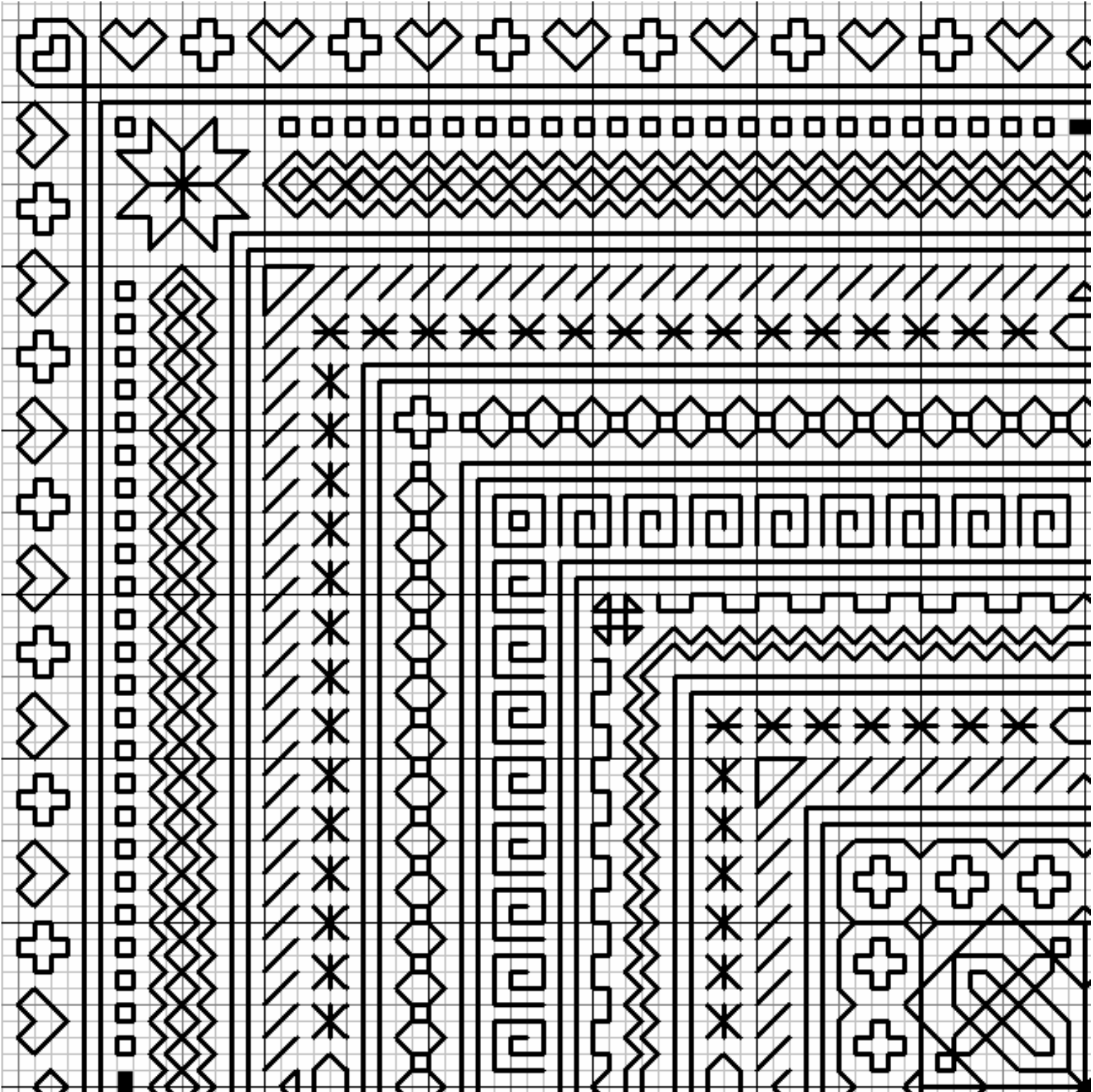
Blackwork Challenge

Center



Blackwork Challenge #1

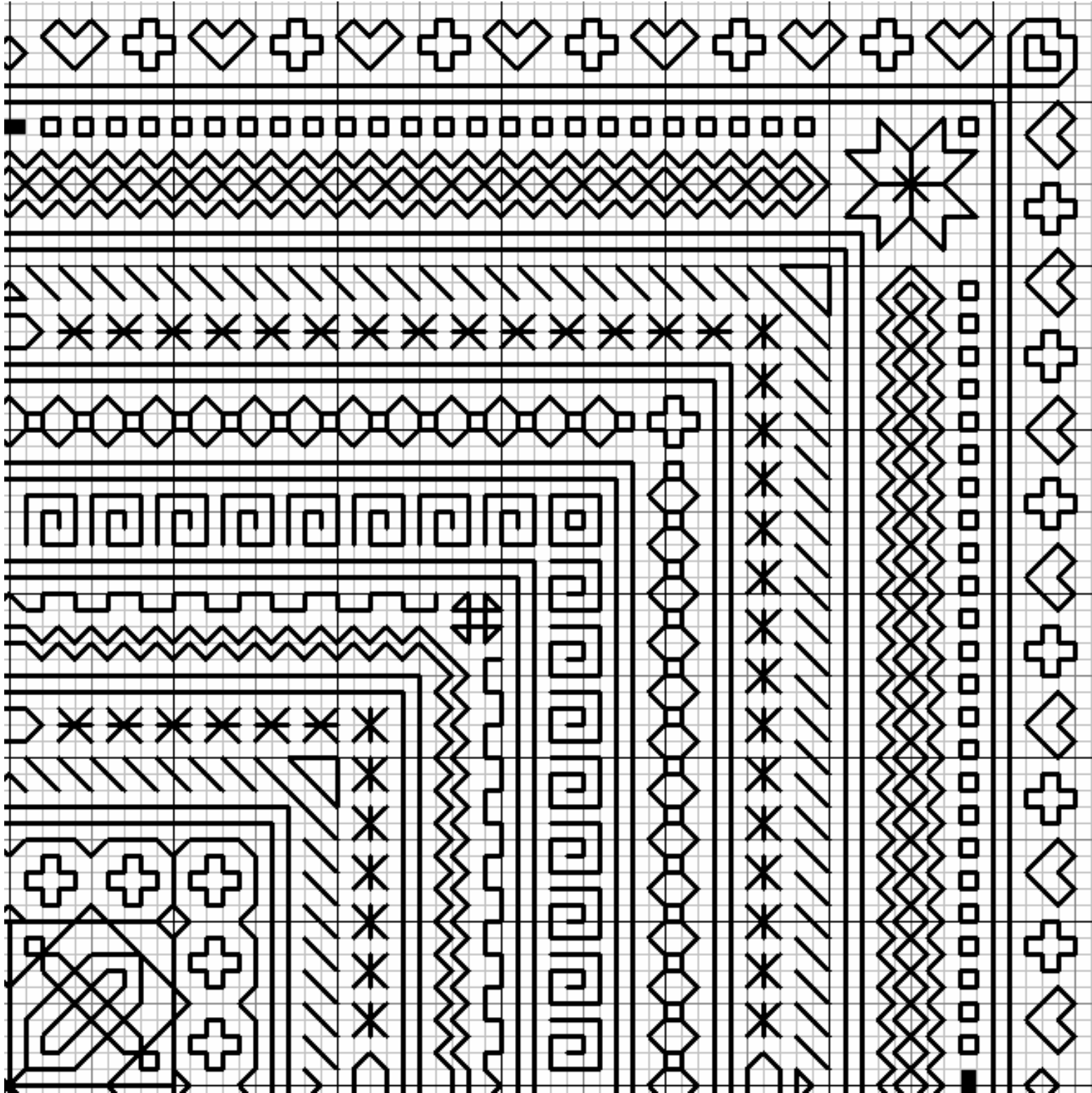
Top Left



center

Blackwork Challenge #1

Top Right

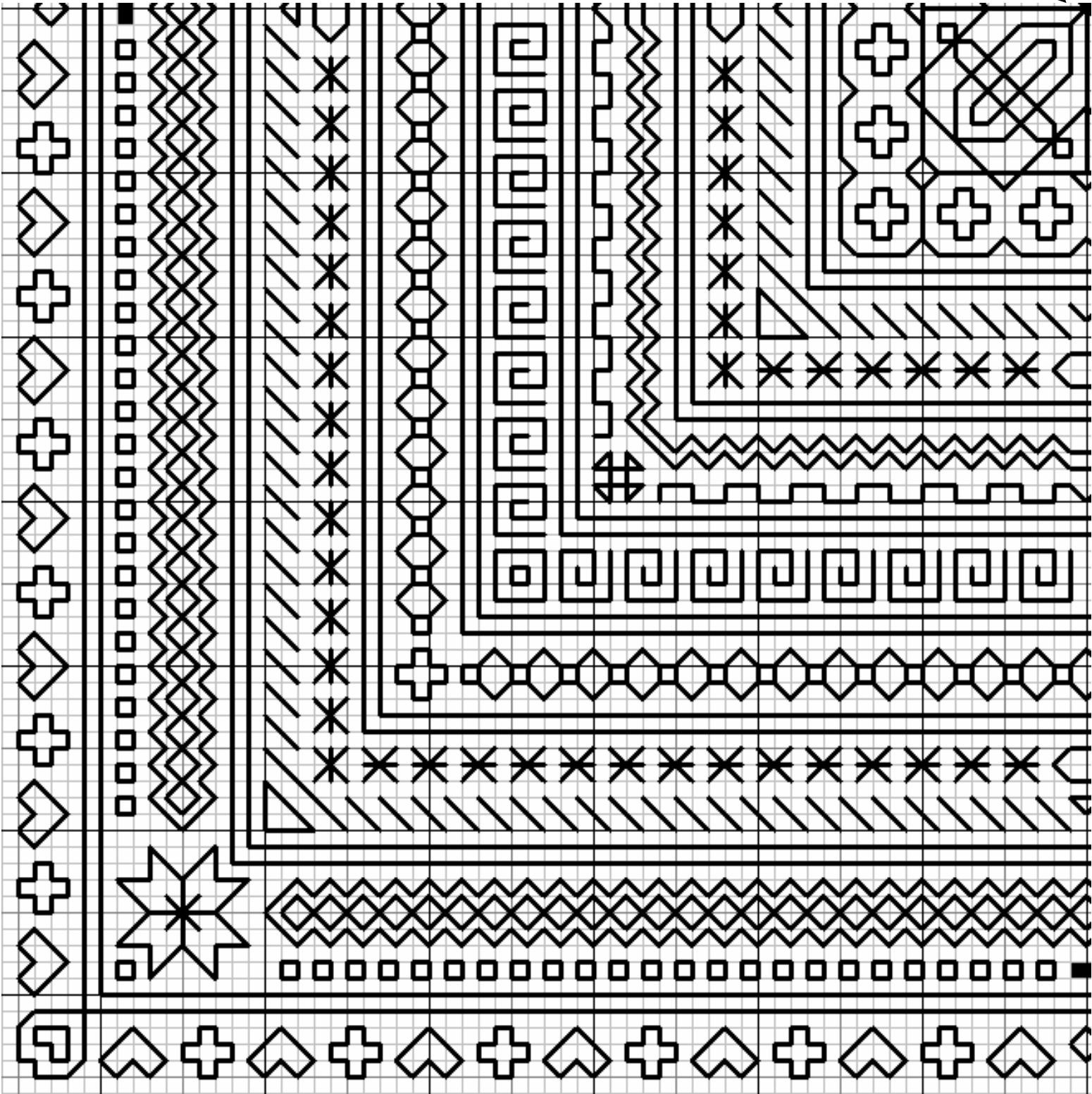


center

Blackwork Challenge #1

Bottom Left

center



Blackwork Challenge #1

Bottom Right

center

