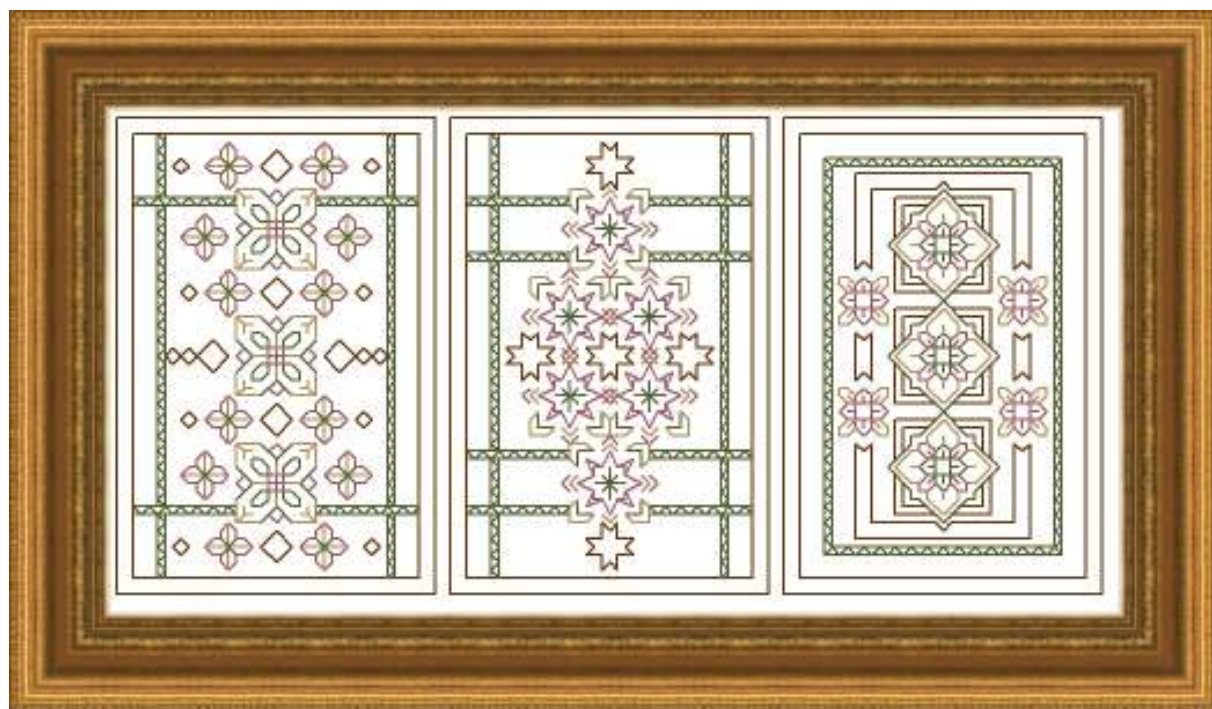
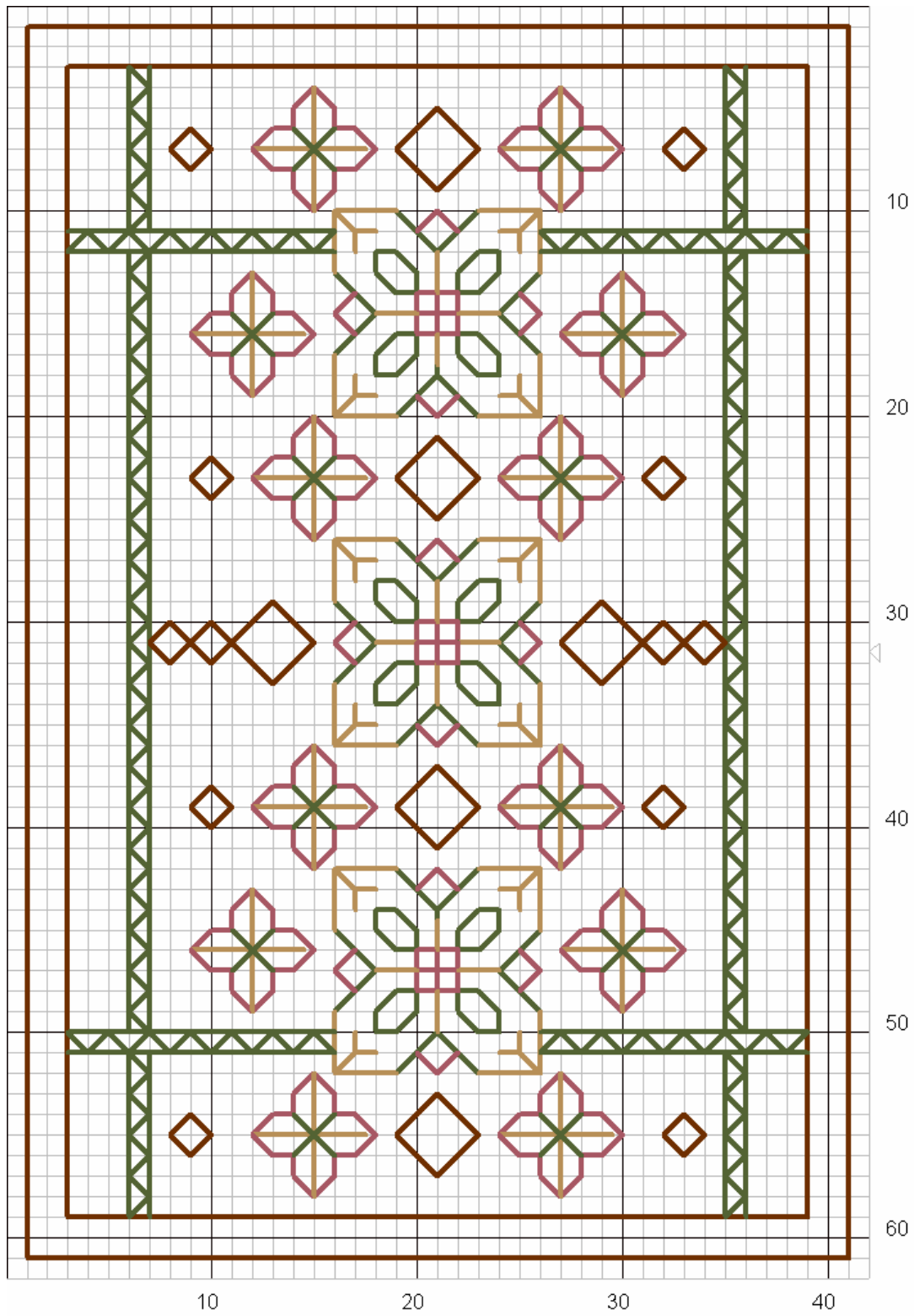


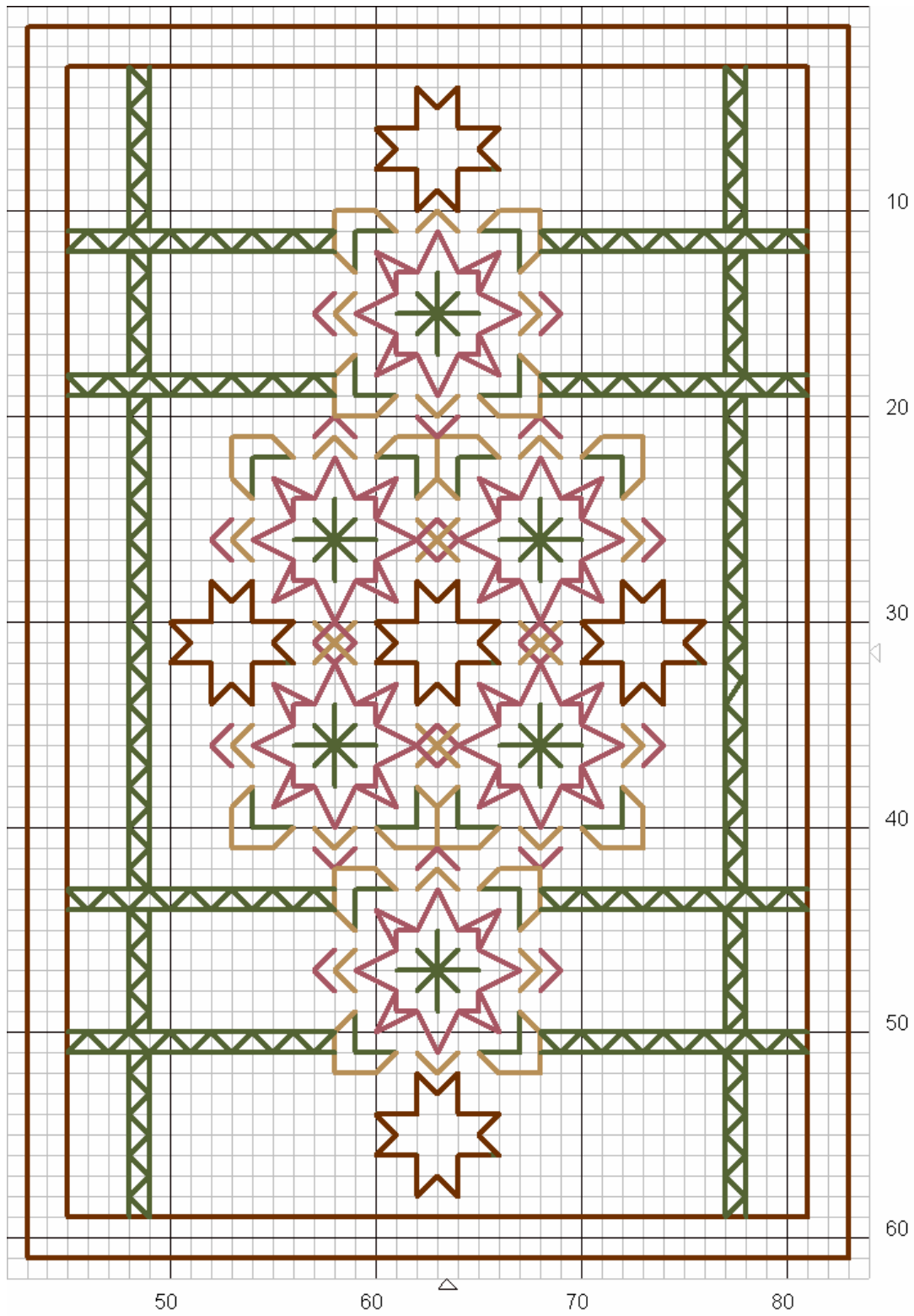
# BLACKWORK TRIO

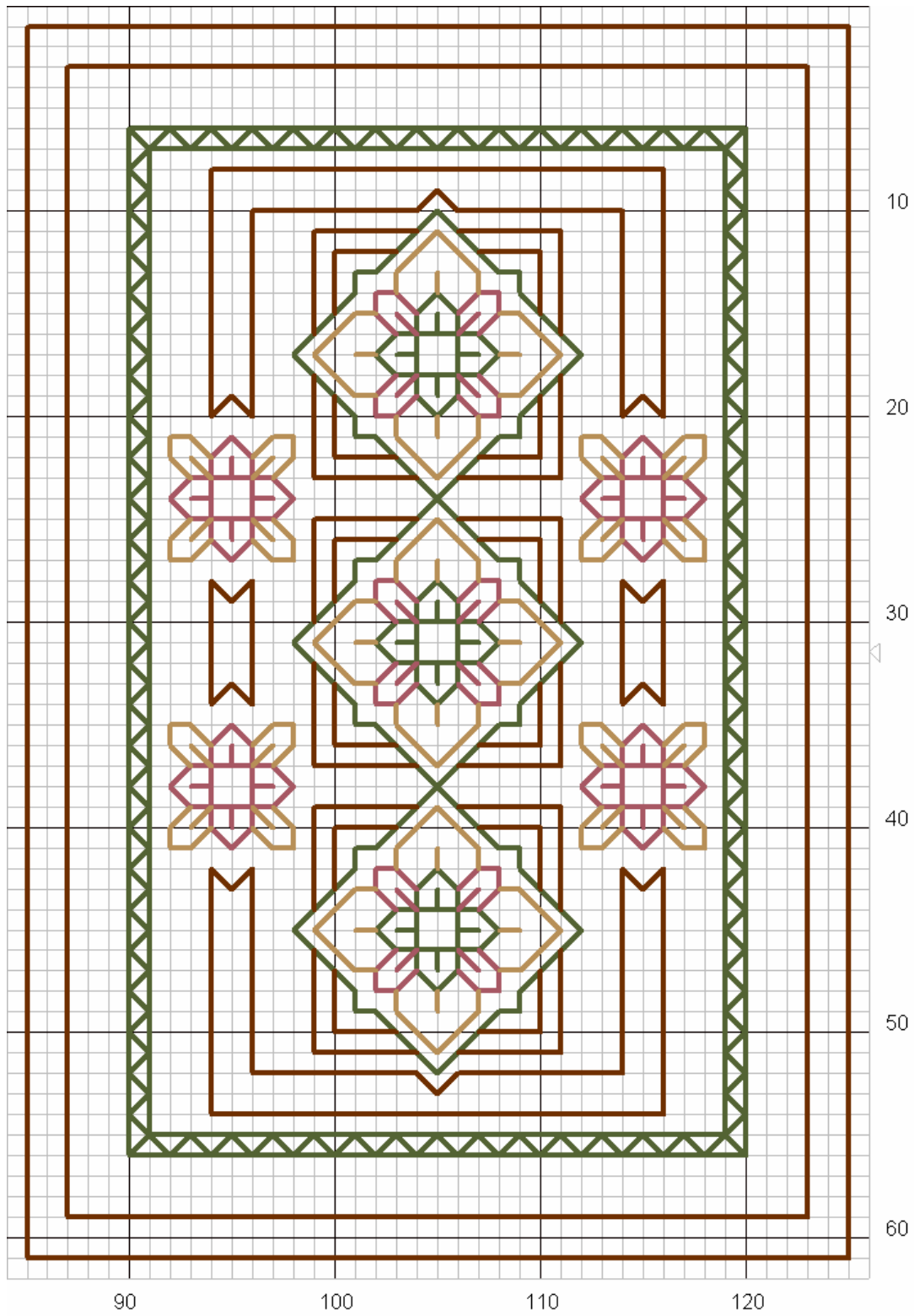
By  
SEBA Designs



SEBA Designs © 2007 BANUDEMIREL







# Blackwork Trio

Author:	Banu Demirel
Grid Size:	127W x 63H
Cloth Count:	14
Fabric:	Evenweave
Design Area:	9,07" W x 4,5" H ( 124 x 60 stitches )

Backstitches: DMC Stranded Cotton			
 436 tan	 3051 green gray - dk	 3726 antique mauve - dk	 300 mahogany - vy dk

Instructions:

## INSTRUCTIONS

Thank you for your purchase, I hope you enjoy stitching my design as much as I enjoyed designing it...

Kindly note that I have NOT left rows or columns on each side of the pattern as the fabric border. Please **remember to increase** this figure for moulding.

<http://yarnree.com/java/xstitchcal.htm> is a good reference to calculate the size of the finished project with different counts.

2 strand of floss is used for regular stitches, 1 strand for backstitches. Color codes are for DMC.

Never hesitate to contact me with your questions or comments through  
[bsdemirel@hotmail.com](mailto:bsdemirel@hotmail.com) <<mailto:bsdemirel@hotmail.com>>

Please check my blog for freebies  
[www.sebablackworks.blogspot.com](http://www.sebablackworks.blogspot.com) <<http://www.sebablackworks.blogspot.com>>

and for other designs...

[www.sebadesigns.com](http://www.sebadesigns.com) <<http://www.sebadesigns.com>>

SEBA Designs © 2007  
BANU DEMIREL