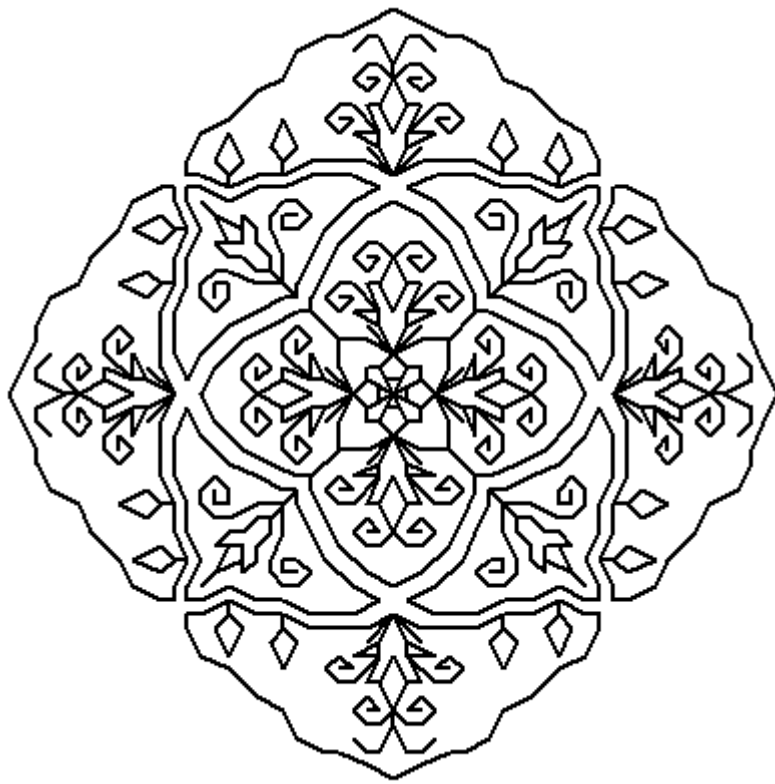
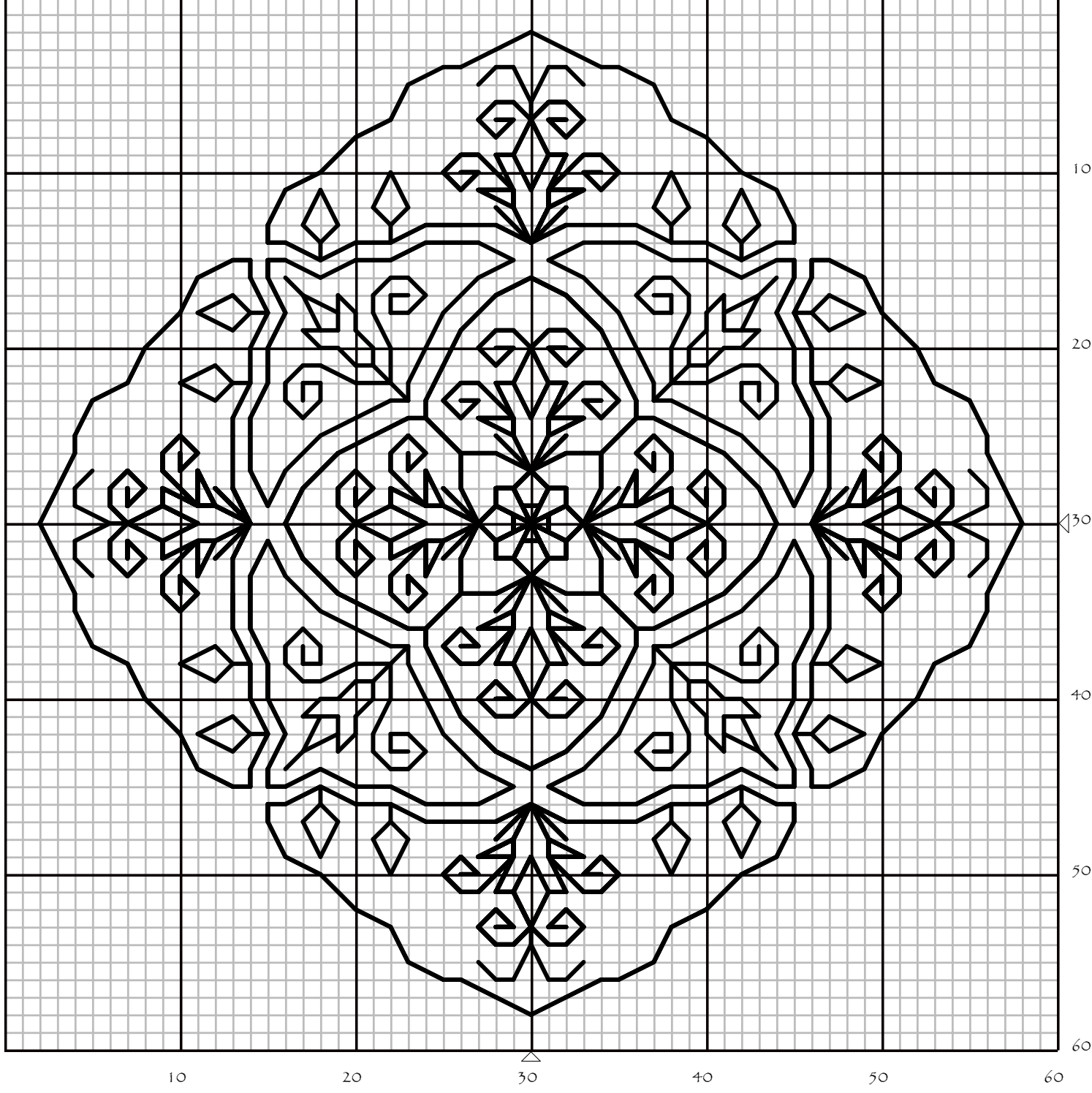


TULIPS
By
SEBA Designs



SEBADesigns © 2007BANUDEMIREL



Tulips

Author:	Banu Demirel
Grid Size:	60W x 60H
Cloth Count:	14
Fabric:	Evenweave
Design Area:	4,29" W x 4,29" H (56 x 56 stitches)

Backstitches: DMC Stranded Cotton

310 black

Instructions:

INSTRUCTIONS

Thank you for your purchase, I hope you enjoy stitching my design as much as I enjoyed designing it....

Kindly note that I have NOT left rows or columns on each side of the pattern as the fabric border. Please **remember to increase** this figure for moulding.

<http://yartree.com/java/xstitchcal.htm> is a good reference to calculate the size of the finished project with different counts.

2 strand of floss is used for regular stitches, 1 strand for backstitches. Color codes are for DMC.

Never hesitate to contact me with your questions or comments through
bsdemirel@hotmail.com

Please check my blog for freebies
www.sebablackworks.blogspot.com

and for other designs...

www.sebadesigns.com

SEBA Designs © 2007
BANU DEMIREL