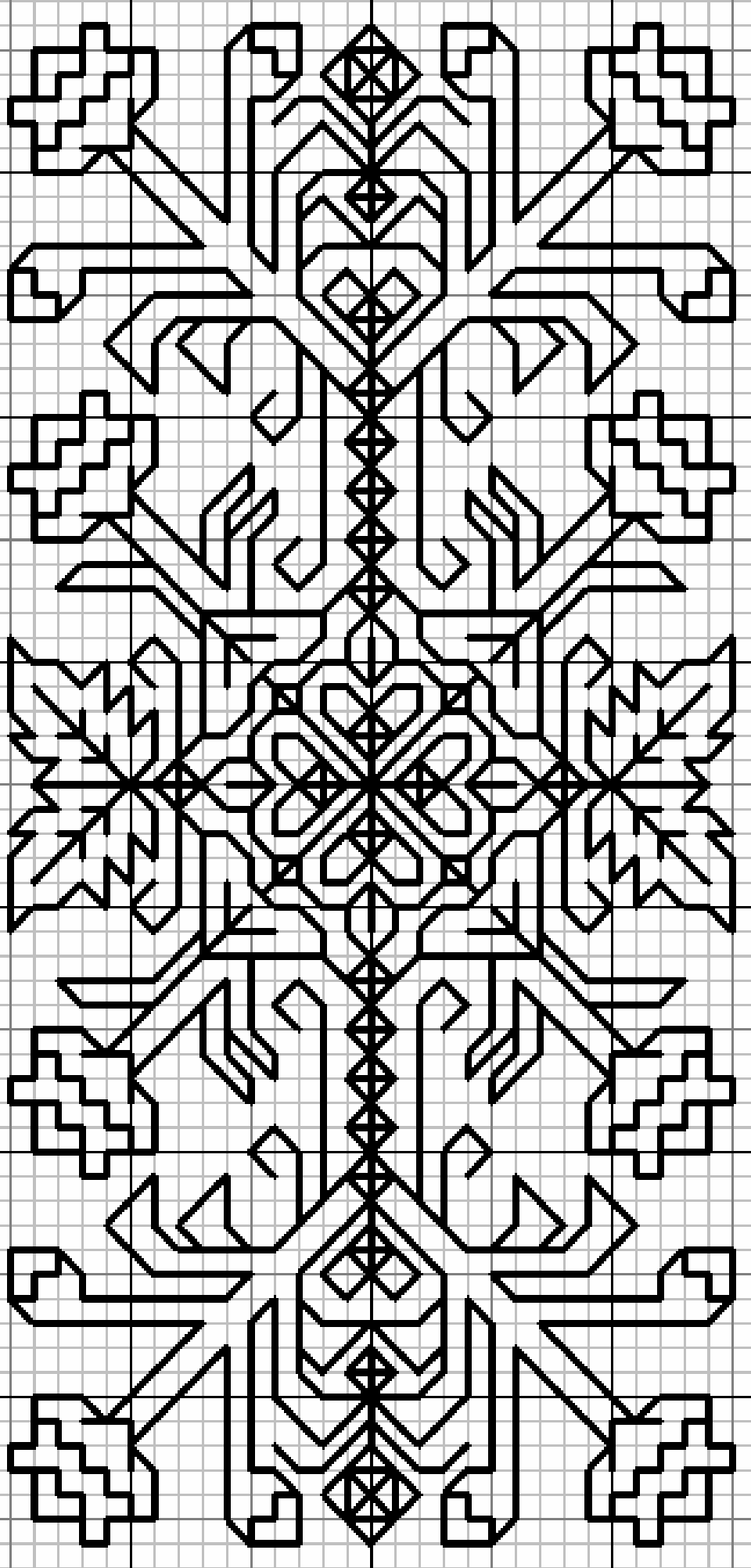


**Reversible blackwork floral panel**



Design size = 30 x 62 stitches

5.4 x 11.2 cm at 14ct

7.6 x 15.7 cm at 10ct

Fabric size = 39 x 66 stitches

7.1 x 12.0 cm at 14ct

9.9 x 16.8 cm at 10ct

Approx 2m of floss