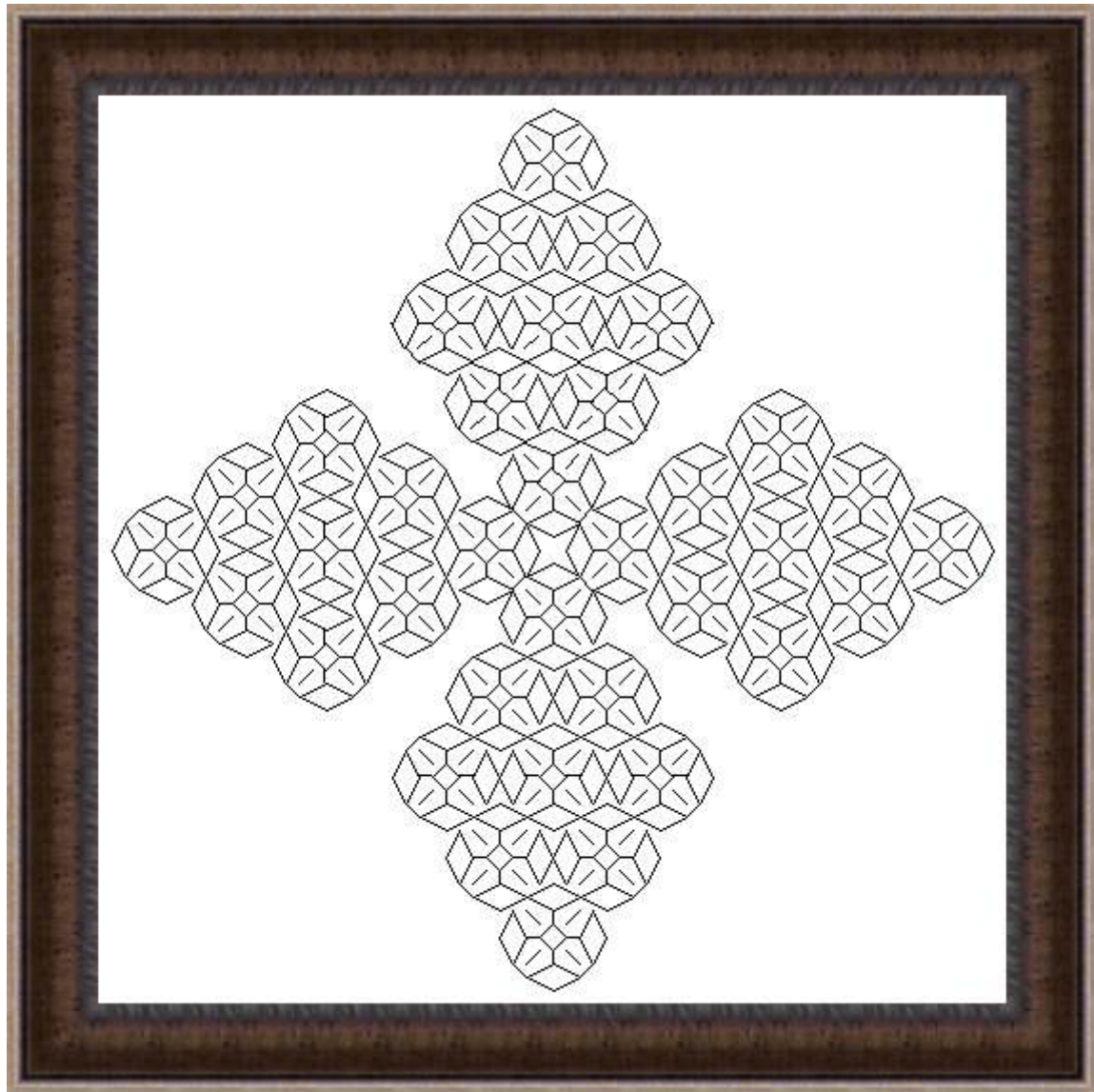


Blackwork Flower

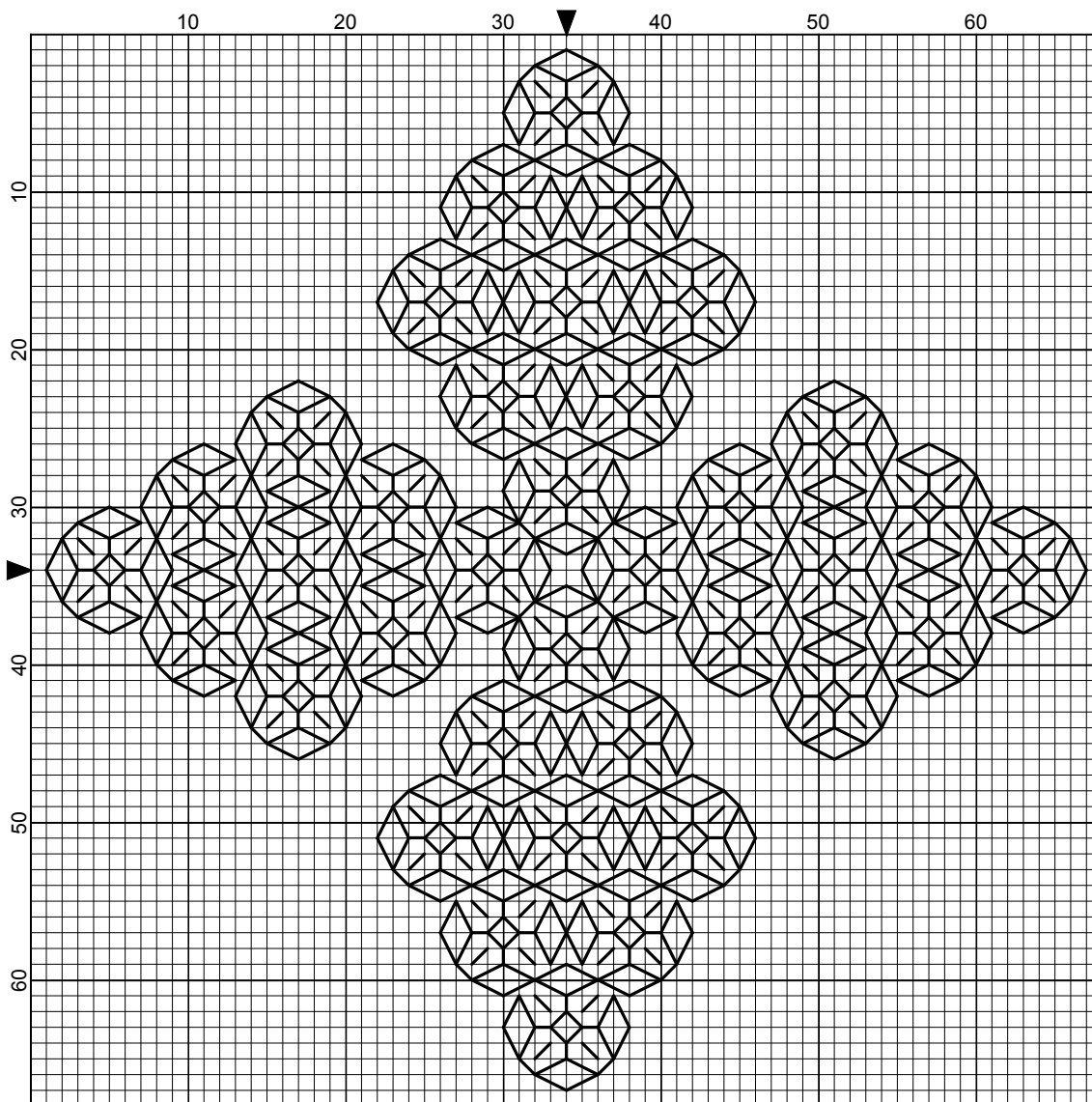
By

SEBADesigns

Banu Demirel



Blackwork Flower by Banu Demirel



Backstitches:  
— DMC-310

© Seba Designs

# Blackwork Flower

---



**Author:** Banu Demirel  
**Company:** SEBA Designs  
**Copyright:** © Seba Designs  
**Website:** [www.sebadesigns](http://www.sebadesigns)  
**Fabric:** Evenweave  
**Grid Size:** 68W x 68H  
**Design Area:** 11,97 cm x 11,97 cm (66 x 66 stitches)

**Backstitch Lines:**  
———— DMC-310 black

## INSTRUCTIONS

Thank you for your purchase, I hope you enjoy stitching my design as much as I enjoyed designing it...

Kindly note that I have NOT left rows or columns on each side of the pattern as the fabric border. Please **remember to increase** this figure for moulding.

<http://yarnree.com/java/xstitchcal.htm> is a good reference to calculate the size of the finished project with different counts.

2 strand of floss is used for regular stitches, 1 strand for backstitches. Color codes are for DMC.

Never hesitate to contact me with your questions or comments through  
[bsdemirel@hotmail.com](mailto:bsdemirel@hotmail.com)

Please check my blog for freebies  
[www.sebablackworks.blogspot.com](http://www.sebablackworks.blogspot.com)

and for other designs...

[www.sebadesigns.com](http://www.sebadesigns.com)

SEBA Designs © 2007  
BANU DEMIREL